



WORKING GENES

7TH BULL SALE 2024

INCHEOCH

TUES 10TH SEPTEMBER 4.30 PM
ON-FARM SALE – ON-LINE BIDDING



14 SIMMENTAL - 2 ANGUS - 3 LUING



Viewing Days:
Sunday 1st Sept 3pm
Thursday 5th Sept 3pm
Or call to arrange a viewing.
Videos at www.incheochfarm.co.uk



MATERNAL GENETICS
Paddock Reared
FOR FERTILITY AND LONGEVITY

Functional Efficient Robust

Why a **WORKING GENES** Bull Sale?

We understand that fertility in a functional, robust cow is the key to an efficient suckler herd. Our breeding program is designed to promote those traits—200 pedigree, recorded cows managed in commercial conditions, with a 2yo calving and strict culling policy.

These bulls have been developed on a low intensive diet to encourage fertility and longevity. Our entire year group of Simmental, Angus and Luing bulls are offered—reared the way we would want them.

'Functional, fertile cattle, structurally sound for longevity, and with good temperament will never go out of style'



The Incheoch **SIMMENTAL** herd of 50 - mostly polled - cows is based on the most functional cow families from the previous 'Dirnanean' herd. Calving ease, structural soundness for longevity and a calm, maternal character have always been a priority—we've turned up the pressure on lower mature weight, ease of fleshing and fertility in order to find you sires that will leave lower maintenance, regular calving, long lasting daughters ...and a steer with do-ability and a good top.

Inchisla **ANGUS** are bred to provide a short-gestation, calving-ease sire and leave easy-finished grass-type cattle. Clare has produced us bulls particularly suited to go to yearling heifers, which have left calves with performance hard to fault.

The Dirnanean **LUING** cows have been the backbone of our business for 50 years. Fertile, hardy, easy to manage, fleshing ability from 2nd quality forage, and a temperament that makes working with cattle a pleasure. Our pure Luing steers can put a lot of weight on at grass and finish before their second winter—if you are visiting, make sure to have a look at them. More cattlemen are turning to the Luing bull for an injection of no-nonsense cow-traits into their herd.



Welcome to the 7th **WORKING GENES** Bull Sale

Bulls (15-19 months)
14 Simmental, 2 Angus, 3 Luings

On-line, silent auction by Yourbid — ends 4.30pm 10th September.

Come to the Sale to see bulls in their paddocks and bid without the pressure of the auction-ring.

Videos coming, and viewing days:
Sunday 1st Sept 3-8pm Thursday 5th Sept 3-8pm

“Robust bulls, bred from Functional, Efficient cows has been our goal for many years now. We run just over 200 pedigree, performance recorded cows, and select hard for fertility, structural soundness, good temperaments and easy calving. We find that easy-fleshed, medium framed cattle with a bit of maternal character tend to be the ones who tick the boxes—and we think the bulls we have on offer today can transfer these traits to your herd.

These bulls were not creep fed, had paddock exercise through the winter and have been summered at grass. Our non-intensive system of developing bulls lets you pick out the ones that can put on flesh from forage.

This group of bulls have been halter broken but not led, and their feet are shown untrimmed.

We hope that you find a bull to do you a bit of good.”

The McGowan family



Terms & Conditions

- Bidding in £ pounds.
- The sale is being held with the help of Pentland Auctions, but purchases will be invoiced by Messrs Finlay McGowan.
- Bulls will be sold with the usual 6 month breeding warranty given from the date they leave Incheoch.

Collection

- We don't expect bulls to be uplifted on sale day—they will be rung before collection and we will do what we can to help delivery where possible.
- Bulls have not been semen tested prior to sale because they are running in large batches and we are trying to manage hormone levels! They are sold subject to passing a test here before they leave.
- All stock can be left at Incheoch, at our risk, until the end of September. Bulls can be kept longer by separate agreement under a wintering option at £25/week.

Herd Health

The health and fertility of the Incheoch herd has always been a priority, being the bedrock of profitable cattle production. As well as controlling the 'Health scheme' diseases, the herd has enjoyed general good health and excellent fertility. Respiratory disease and scours, along with most of the common cattle ailments are rare at Incheoch and antibiotic use is minimal.

Johnes Disease: The herd is a member of the Premium Cattle Health Scheme run by SAC and has been pro-actively engaged in controlling Johnes Disease, over and above the requirements of the scheme, for 26 years. There have been no clinical cases within the herd for many years and the herd as a risk level 2. In the last 9 years a total of 1966 individual blood tests have been carried out with only 6 positives. None of the animals presented for sale have a history of Johnes in their families.

BVD: The herd has been fully accredited for 18 years and is additionally vaccinated. All animals presented for sale are individually vaccinated and accredited.

Leptospirosis: There is no history of this disease in the herd and it is now policy not to vaccinate the breeding herd, but sale animals have been vaccinated.

IBR: The breeding herd is vaccinated, believed IBR free though not accredited. Bulls are not vaccinated prior to sale but this can be arranged prior to collection if they are not going to an IBR free herd

If you have any questions regarding the health status please feel free to speak to Neil or call me at Thrums Vet Group on 01575 572643.

Graeme Richardson

Catalogue Details: We have tried to supply as much relevant information in the catalogue as we can, and present it as clearly as possible.

EBVs are shown in the format shown below. Please be aware that the EBVs for different breeds cannot be directly compared. For convenience, a colour code system highlights where the ebv falls within the wider breed genetic pool:

- Top 10%
- Top 25%
- Average+
- Lower 50% (*Mwt only*)

Index of relevant traits for:
 TI = Bull to be used in terminal herd
 SRI = for use in Self Replacing herd with proportion of daughters kept.

Calving Ease traits:
 Dir = Direct Calving Ease (calves born, sired by the bull)
 Dtrs = Daughter's Calving Ease (how easily his daughters give birth).
 Postive Numbers Favourable

Carcase Traits (from Ultrasound Scanning):
 Cwt = Carcase Weight
 EMA = Eye Muscle Area
 Fat = Positve for More Fat.

Gestation Length (negative for shorter gestation).
 Birthweight (lower number for smaller birthweighth).

Maternal Traits:
 Milk is measure of Maternal influence on calf growth to 200days.
 SS = Scrotal Circumference.

Gibby's Real Deal

Calv-Ease		Birth		Growth							Carcase			Index	
Dir	Dtrs	GL	Bwt	200	400	600	Mwt	Milk	SS	Cwt	EMA	Fat	TI	SRI	
2.6	3.7	-1.4	1.3	44	65	65	74	5	0.2	48	4.4	0.9	77	95	
82%	77%	85%	92%	88%	88%	85%	80%	75%	81%	76%	59%	73%	(accuracy)		

Growth Traits:
 200, 400 & 600 day weights
 Mwt = Mature Weight (we have highlighted grey the bulls with EBVs in the **lower 25%** of the breed for Mature Weight).
 Higher numbers, more kgs.

Accuracy represents the reliability of the EBV prediction—it reflects the amount of data that has been gathered on the individual and the members of it's family. Over 70% would give a high 'confidence level' in the EBV (often only achieved with progeny measured), and lower than 30% would be low confidence.

Lot 1 Incheoch Paragon P

UK 542191 604595
born 03/04/23
862 kg 43 cm (8th Aug)

Long and powerful, Paragon proves that length weighs.

In 9 calvings at 366d interval, D18 has never been assisted. These calves include Glencoe (retained), Iceman (Rob Wainwright, Coll), and the mother of Niko (Islavale).

Top 1% growth traits with an above average calving ease. He's a polled, powerhouse bull from a great cow line.



Incheoch Keystone PP	Gibby's Real Deal PP
	I. Polarine H3 P
D. Calypso D18 P	Rissington Grandeur PP
	D. Calypso B9

Calv-Ease		Birth		Growth				Carcase				Index		
Dir	Dtrs	GL	Bwt	200	400	600	Mwt	Milk	SS	Cwt	EMA	Fat	TI	SRI
-0.6	2.9	-2.0	3.7	53	94	96	102	7	0.6	66	4.6	-0.1	110	128
51%	44%	64%	75%	72%	70%	66%	52%	44%	68%	56%	45%	55%	(accuracy)	

Lot 2 Incheoch Pretoria P

UK 542191 104583
born 31/03/23
848 kg 46 cm (8th Aug)

Top 1% growth predictions and breed leading muscle area.

Dam pictured on the back cover with Pretoria at foot. We've been keen to access some South African breeding and the Polled Century bull brought the deep red colour and sure-footed functionality that we were hoping for.

DNA tested Polled, but has grown scurs. 50% calves expected to be polled from horned cows.



Incheoch Keystone PP	Gibby's Real Deal PP
	I. Polarine H3 P
Incheoch Nancy K1	BBN Polled Century P
	Incheoch Nancy H5 P

Calv-Ease		Birth		Growth				Carcase				Index		
Dir	Dtrs	GL	Bwt	200	400	600	Mwt	Milk	SS	Cwt	EMA	Fat	TI	SRI
-3.0	0.2	-0.9	4.2	50	95	97	98	9	1.6	67	6.2	-0.8	116	131
46%	36%	61%	74%	70%	68%	64%	53%	36%	68%	54%	43%	52%	(accuracy)	

Lot 3 Incheoch Porthos PP

UK 542191 404635
born 14/04/23
794 kg 44 cm (8th Aug)

Porthos is a smart, homo-polled bull with a fantastic set of maternal figures. Easy-calving, milky, medium sized daughters, but plenty growth. Breed-leading scrotal & fat for fertility.



J12 is turning into an ideal little cow – 1st calved at 23 months, 5 calvings all unassisted at 359d interval, a perfect udder and weaning 54% of her bulling weight (pictured right).



Incheoch Keystone PP	Gibby's Real Deal PP
	Incheoch Polarine H3 P
Incheoch Fiona J12 P	Dirnanean Druid P
	Woodhall Electra P

Calv-Ease		Birth		Growth							Carcase			Index	
Dir	Dtrs	GL	Bwt	200	400	600	Mwt	Milk	SS	Cwt	EMA	Fat	TI	SRI	
-1.9	1.5	0.1	2.9	38	77	73	61	8	2.0	50	4.8	0.6	88	105	
48%	38%	61%	75%	71%	70%	65%	52%	39%	69%	56%	45%	54%	(accuracy)		

Lot 4 Incheoch Pilot PP

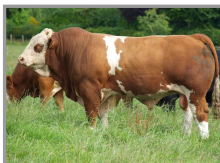
UK 542191 304529
born 19/01/23
786 kg 41 cm (8th Aug)

Homozygous polled. Balance of good performance in a low mature weight, high fat package.

With Real Deal and Iceman in his background, Pilot is sure to breed quiet, easy fleshing cattle.



Keystone (pictured right) sire of Lots 1-4.



Incheoch Keystone PP	Gibby's Real Deal PP
	Incheoch Polarine H3 P
I. Lightning L16 P	Kyleston Iceman P
	D. Lightning D6 P

Calv-Ease		Birth		Growth							Carcase			Index	
Dir	Dtrs	GL	Bwt	200	400	600	Mwt	Milk	SS	Cwt	EMA	Fat	TI	SRI	
0.7	0.1	-1.1	2.1	37	68	67	59	8	1.2	46	4.7	0.5	82	95	
47%	39%	61%	69%	61%	58%	57%	47%	34%	45%	45%	34%	45%	(accuracy)		

Lot 5 Incheoch Patrick PP

UK 542191 404586
born 01/04/23
802 kg 42.5 cm (8th Aug)

Homo-polled; long, deep and wide; dark red and placid; milk, muscle and trait-leading calving ease; reduced cow weight and higher fat for easier keeping daughters. Patrick is pretty much on target for where we see the future.



Dam calved at 28mths with 5 calvings at 361 day interval. She bred Nelson, one of the picks in last years' sale.

DNA colour-tested non-diluter. Should leave only red or black calves.

Auroch Deuter PP	PHS Polled Worldwide P
	Auroch Absolute P
Incheoch Redstar J2 P	Gibby's Real Deal P
	Incheoch Redstar G2 P

Calv-Ease		Birth		Growth				Carcase			Index			
Dir	Dtrs	GL	Bwt	200	400	600	Mwt	Milk	SS	Cwt	EMA	Fat	TI	SRI
8.0	3.7	-2.0	0.4	38	67	67	54	10	1.4	52	6.4	0.2	91	113
52%	48%	65%	76%	72%	71%	67%	56%	46%	70%	58%	47%	55%	(accuracy)	

Lot 6 Incheoch Piccine P

UK 542191 404670
born 23/04/23
772 kg 45 cm (8th Aug)

3/4 brother to Lot 5 (G30 is a full sister to G2), these bulls are a very similar pair. Our young Deuter cows are very milky and nice types – you are looking at breed leading milk ebvs here.



G30 has produced a string of top end bulls and has the best calf at foot this year again.

Lot 6 pictured at 6 months. Scurred.



Auroch Deuter PP	PHS Polled Worldwide P
	Auroch Absolute P
D. Redstar G30 P	Dirnanean Apostle PP
	D. Wandilla W14

Calv-Ease		Birth		Growth				Carcase			Index			
Dir	Dtrs	GL	Bwt	200	400	600	Mwt	Milk	SS	Cwt	EMA	Fat	TI	SRI
5.9	2.9	-1.2	1.2	36	67	67	54	14	2.5	51	6.4	0.0	92	116
54%	51%	66%	77%	73%	72%	68%	57%	49%	71%	60%	48%	57%	(accuracy)	

Lot 7 Incheoch Panama P

UK 542191 104604
 born 04/04/23
 758 kg 37.5 cm (8th Aug)

Full brother to Fontana (pictured below, still working at 10 years old).

Anyone viewing the herd pretty quickly pick out the Fontana daughters. B7 is just away having first calved at 26 months and giving us 11 natural calves.



Good feet & udders and maternal type expected from this good-natured bull.



Gibby's Real Deal PP	Gibby's Nicholas P
	Gibby's Nebraska 16N P
Dirnanean Bali B7	Halenook Vargner
	Dirnanean Victoria V15

Calv-Ease		Birth		Growth				Carcase				Index		
Dir	Dtrs	GL	Bwt	200	400	600	Mwt	Milk	SS	Cwt	EMA	Fat	TI	SRI
1.3	2.6	0.0	3.2	40	66	73	91	4	0.6	48	4.0	0.5	79	98
56%	53%	64%	76%	67%	64%	63%	55%	52%	52%	52%	39%	50%	(accuracy)	

Lot 8 Incheoch Padre PP

UK 542191 504573
 born 28/03/23
 716 kg 40 cm (8th Aug)

Homozygous polled Padre is the last son of Iceman (pictured below), who sired the top selling bull last year. He has proved to be a reliable breeder of thick, soggy, easy-fleshing cattle.



Gentle temperaments, easy calvings and 100% polled calves from Padre.



Kyleston Iceman P	Keeldrum Eclipse P
	Kyleston Ruffles F10
I. Lightning K12 P	Dirnanean Emerald ET
	Incheoch Lightning G3 P

Calv-Ease		Birth		Growth				Carcase				Index		
Dir	Dtrs	GL	Bwt	200	400	600	Mwt	Milk	SS	Cwt	EMA	Fat	TI	SRI
6.7	0.8	-2.0	-0.2	32	50	46	39	6	0.1	32	1.9	0.2	62	70
42%	40%	53%	75%	67%	66%	63%	52%	36%	62%	53%	41%	49%	(accuracy)	

Lot 9 Incheoch Percy P

UK 542191 504699
 born 04/05/23
 784 kg 41 cm (8th Aug)

Percy is a real beefy stamp of a bull, with a nicely balanced set of figures. We think he's a great 'all-rounder' bull and has a herd-sire look about him.

Dam calved at 24mths with 6 calvings at 361 day interval, no assists and a nice udder – and she's a real looker (pictured).



Slievenagh Joker P	Kilbride Farm Glenhead P
	Slievenagh Whitney
Incheoch Meise I6	Dirnanean Fontana P
	Dirnanean Meise G10 P

Calv-Ease		Birth		Growth						Carcase			Index	
Dir	Dtrs	GL	Bwt	200	400	600	Mwt	Milk	SS	Cwt	EMA	Fat	TI	SRI
1.1	1.5	0.8	2.3	37	73	74	78	11	-0.4	56	4.3	-0.2	91	100
47%	45%	64%	76%	72%	71%	67%	55%	41%	70%	58%	47%	56%	(accuracy)	

Lot 10 Incheoch Picasso

UK 542191 604707
 born 14/05/23
 724 kg 37 cm (8th Aug)

Picasso brings some serious growth performance with calving ease.

This lengthy, smart bull comes from a big-framed cow line. Dam sired by the pick of our first sale – Iceman (pictured below), is still going strong with Rob Wainwright. on the Isle of Coll



Slievenagh Joker P	Kilbride Farm Glenhead P
	Slievenagh Whitney
Incheoch Girlie K16 P	Incheoch Iceman PP
	Dirnanean Girlie E15 ET

Calv-Ease		Birth		Growth						Carcase			Index	
Dir	Dtrs	GL	Bwt	200	400	600	Mwt	Milk	SS	Cwt	EMA	Fat	TI	SRI
-0.5	1.9	0.0	4.0	47	82	91	111	5	0.0	61	2.8	-0.6	95	109
48%	45%	52%	75%	69%	69%	65%	54%	38%	69%	56%	45%	53%	(accuracy)	

Lot 11 Incheoch Parana

UK 542191 504713
born 19/05/23
722 kg 39 cm (2nd Aug)

Parana is a solid, square-made bull with a canny disposition. He has a robust look about him and with Joker and Iceman (pictured below), behind him—he's going to be thick and easy-fleshing.



Mother is an easy-keeping young cow who calved at 26 months with 368d int over 3 calvings.



Slievenagh Joker P	Kilbride Farm Glenhead P
	Slievenagh Whitney
Incheoch Grizel L1	Kyleston Iceman P
	Incheoch Grizel I12 P

Calv-Ease		Birth		Growth				Carcase					Index	
Dir	Dtrs	GL	Bwt	200	400	600	Mwt	Milk	SS	Cwt	EMA	Fat	TI	SRI
2.2	0.6	-0.2	2.3	36	70	71	76	5	-0.5	49	2.9	-0.1	84	94
46%	43%	54%	75%	70%	69%	65%	54%	37%	69%	57%	46%	55%	(accuracy)	

Reference Sire

Slievenagh Joker P

Our test for stock sires is *Do they fit into the 'Functional, Efficient & Robust' box*. Joker fits comfortably.

We like his depth and muscle pattern, his masculinity and disposition—and we like that he's never any hassle.



We have daughters calved at 2yo and making a job of their calves without much fuss. His sons have a good bit of power and really tip the scales.

Kilbride F. Glenhead P	Sneumgaard Emperor PP
	Kilbride Farm Jolly 12D
Slievenagh Whitney	Cleenagh Flasher
	Woodhall Riva

Calv-Ease		Birth		Growth				Carcase					Index	
Dir	Dtrs	GL	Bwt	200	400	600	Mwt	Milk	SS	Cwt	EMA	Fat	TI	SRI
-1.0	0.4	0.6	4.4	45	90	96	105	6	0.2	64	2.8	-0.9	106	121
74%	69%	79%	90%	86%	85%	81%	68%	52%	80%	71%	57%	67%	(accuracy)	

Lot 12 Incheoch Polestar PP

UK 542191 404691
born 28/04/23
730 kg 43 cm (8th Aug)

Polstar has been Finlay's pick since a calf. His mother is a big, fleshy and sweet Fontana cow (pictured below with Nearco – her son from last sale).

High milk and muscle, with above average fat and easy-calving daughters.



Dirnanean Apostle PP	Rissington Grandeur PP
	Dirnanean Sioux S10 P
Incheoch Meise I9 P	Dirnanean Fontana P
	Dirnanean Meise E3x P

Calv-Ease		Birth		Growth				Carcase				Index		
Dir	Dtrs	GL	Bwt	200	400	600	Mwt	Milk	SS	Cwt	EMA	Fat	TI	SRI
-2.3	1.1	1.2	2.7	36	62	63	70	8	0.6	48	5.7	-0.1	78	85
56%	54%	65%	76%	73%	72%	69%	60%	54%	72%	61%	51%	60%	(accuracy)	

Lot 13 Incheoch Pedro PP

UK 542191 404698
born 01/05/23
752 kg 39 cm (8th Aug)

Pedro is the thickest Apostle bull. Wide and deep made with plenty power – out of one of the strongest Real Deal daughters – who calved at 24 months (376d int in 3 calvings).

Nice balance of figures - about average on calving, good early growth tailing off to smaller mature weight; high fat for quicker, easier finishing; breed-leading maternal and muscle.



Dirnanean Apostle PP	Rissington Grandeur PP
	Dirnanean Sioux S10 P
Incheoch Girlie L10 P	Gibby's Real Deal PP
	Dirnanean Girlie G28

Calv-Ease		Birth		Growth				Carcase				Index		
Dir	Dtrs	GL	Bwt	200	400	600	Mwt	Milk	SS	Cwt	EMA	Fat	TI	SRI
-0.9	0.7	0.3	2.1	39	59	59	58	13	0.0	46	6.1	1.1	72	78
55%	53%	65%	76%	73%	72%	68%	60%	51%	71%	61%	51%	59%	(accuracy)	

Lot 14 Incheoch Paul PP

UK 542191 604616
born 07/04/23
768 kg 40.5 cm (8th Aug)

'Curve-bender' growth figures (low birthweight, good early growth tailing off to low cow weight) and good carcase ebvs. All polled calves. The sires in his pedigree go Apostle, Fontana, Franklyn, Nelson, Polar – and (barring Nelson) these have been the best 4 cow-breeders we've used in 50 years of breeding Simmentals.

His mother 1st calved at 24 months and boasts a 361 day interval over 5 calvings.



Dirnanean Apostle PP	Rissington Grandeur PP
	Dirnanean Sioux S10 P
I. Winnipeg I5 P	Dirnanean Fontana P
	Dirnanean Winnipeg G1 P

Calv-Ease		Birth		Growth				Carcase				Index		
Dir	Dtrs	GL	Bwt	200	400	600	Mwt	Milk	SS	Cwt	EMA	Fat	TI	SRI
-1.0	-0.4	-0.3	1.9	38	65	62	53	9	0.8	49	6.1	0.3	82	89
56%	54%	65%	77%	72%	70%	68%	60%	54%	66%	59%	49%	59%	(accuracy)	

Reference Sire

Dirnanean Apostle PP

Apostle cows have been the stronghold of our herd for some time, and we keep dipping back into the tank to try to breed some more.

By a New Zealand sire and with a maternal grandmother straight out of the AWL herd in Manitoba, he's pretty reliable on functionality – a fixer on feet and udders.

Apostle daughter pictured right.



Rissington Grandeur PP	Rissington Admiral
	Rissington C795
Dirnanean Sioux S10 P	Starline Nelson
	Dirnanean Winnipeg P

Calv-Ease		Birth		Growth				Carcase				Index		
Dir	Dtrs	GL	Bwt	200	400	600	Mwt	Milk	SS	Cwt	EMA	Fat	TI	SRI
-4.0	-1.5	0.7	1.2	34	55	44	20	14	1.1	43	7.5	0.0	73	67
91%	90%	89%	95%	95%	93%	91%	85%	86%	86%	84%	72%	82%	(accuracy)	

Reference Sire

Millah Murrah Nugget N266

This Australian herd is very highly regarded worldwide.

Nugget has some great figures, but it was his muscling, thickness and soft finish that attracted Robert Gill – who processes 20,000 cattle a year through his meat business – to fork out \$54,000 for him.



The first crop of 13 Nugget sons averaged just short of Aus \$30,000.

Pictured at 13 mths. UK EBVs below:

Ascot Hallmark H147	Te Mania Emperor E343
	Millah Murrah Brenda
M'Murrah HoneyH159	Booroomooka Theo T030
	M'Murrah Honey F120

Calv-Ease		Birth		Growth				Carcase				Index		
Dir	Dtrs	GL	Bwt	200	400	600	Mwt	Milk	SS	Cwt	EMA	Fat	TI	SRI
1.0	2.0	-4.2	0.8	49	99	118	102	13	3.2	78	8.1	0.1	46	64
56%	42%	83%	92%	86%	86%	83%	69%	70%	77%	77%	57%	68%	(accuracy)	

Reference Sire Te Mania Nebo

Te Mania Australia was a herd and breeding program that really impressed me when I spent a few days there in 2015. Bred for a 400kg dwt, high marbled steer for the Japanese market, these no-nonsense cattle had plenty scope, growth and functionality.



Nebo is a Angus Australia trait leader for Calving Ease, Docility and Marbling.

We think he is a great fit for a heifer-bull: short gestation, low birthweight and easy-fleshing cattle. UK EBVs below:

Te Mania Jenkins J89	G A R Twinhearts 8418
	Te Mania Japara G115
Te M. Wargoona J214	Vermont Drambuie D57
	Te M Wargoona G455

Calv-Ease		Birth		Growth				Carcase				Index		
Dir	Dtrs	GL	Bwt	200	400	600	Mwt	Milk	SS	Cwt	EMA	Fat	TI	SRI
3.3	2.3	-4.4	-0.4	58	93	115	92	17	3.7	74	8.3	-0.3	45	66
77%	58%	93%	97%	94%	94%	91%	83%	74%	90%	84%	68%	80%	(accuracy)	

Lot 15 Inchisla Jordon Eric Z750

UK 542191 704750
born 28/03/23
840 kg 44 cm (8th Aug)

We don't think a bull of this quality comes your way very often—irrespective of breed. He was a class-act as a calf and his thickness and power are only eclipsed by his character. He is a powerhouse, yet his full sister is a sweet, feminine calved heifer.



Pictured last year with his mother.



Myostatin – no variants

Millah Murrah Nugget N266	Ascot Hallmark H147
	M Murrah Honey H159
Inchisla Jasmine Erica S125	Oakchurch Evor N123
	Inchisla Jasm'Erica P853

Calv-Ease		Birth		Growth						Carcase			Index	
Dir	Dtrs	GL	Bwt	200	400	600	Mwt	Milk	SS	Cwt	EMA	Fat	TI	SRI
-1.2	-0.2	-2.4	4.5	54	105	120	101	14	1.7	79	7.8	-0.9	50	63
39%	31%	62%	74%	68%	67%	63%	52%	47%	69%	55%	45%	51%	(accuracy)	

Lot 16 Inchisla Pathfinder Z749

UK 542191 604749
born 19/03/23
826 kg 41.5 cm (8th Aug)

For all the attraction to Lot 15, there is still debate over which of these 2 bulls is best.

T128 is full sister to 2 of our top bulls – Panache to M/s Garrioch, Huntly and Pheonix (pictured—retained as stock bull). She has a 358 day interval over 6 calvings, calving down at 24mths.



Myostatin – no variants



Te Mania Nebo N424	Te Mania Jenkins J89
	Te Mania Wargoona J214
Inchisla Pride T128	Oakchurch Evor N123
	Inchisla Pride N630

Calv-Ease		Birth		Growth						Carcase			Index	
Dir	Dtrs	GL	Bwt	200	400	600	Mwt	Milk	SS	Cwt	EMA	Fat	TI	SRI
2.6	1.4	-3.1	1.4	57	94	114	99	17	2.3	73	5.4	0.8	42	60
46%	37%	64%	74%	69%	68%	64%	56%	48%	71%	57%	48%	54%	(accuracy)	

Lot 17 Dirnanean Chinook

UK 542191 604602
born 04/04/23 Frame Score: 6.8
794 kg 39 cm (10th Aug)

'Flesh from Forage' is what this big, deep bull is all about. Chinook's background is full of structurally sound, milky lines and plenty cows who have stood the test of time.

Myostatin: No Variants



First Calving	25mth	Feet	9
No Calvings	11	Locomotion	9
Calving Int	362 d	Udder	10
Cow to bull23	716 kg	Teats	10
Wean ratio	51%	FrameScore	7

Dirnanean Zion P	Dirnanean Senator P
	Dirnanean H23
Dirnanean P30	Luig Lawman
	Dirnanean K44

Calv-Ease		Birth		Index	Growth				Carcase		Index	Maternal				Index	
Dir	Dtrs	GL	Bwt	CV	200	400	Musc	Fat	BV	Milk	Age1st	L/span	Int	MV	MPV		
-2.1	-1.3	0.5	1.2	0	24	44	2.4	0.3	29	5	-0.21	0.4	4.5	20	18		
63%	43%	55%	69%	62%	74%	69%	66%	37%	74%	49%	46%	39%	36%	42%	49%		

Lot 18 Dirnanean Chief P

UK 542191 104646
born 18/04/23 Frame Score: 6.3
688 kg 38.5 cm (10th Aug)

A robust, thick-made bull with plenty length in the right places, gives him a nice maternal balance. Maternal granddam weaned 11 calves and ggdam 12.

Myostatin: No Variants



First Calving	25mth	Feet	9
No Calvings	4	Locomotion	9
Calving Int	349 d	Udder	9
Cow to bull23	750 kg	Teats	9
Wean ratio	41%	FrameScore	7.5

Dirnanean Zion P	Dirnanean Senator P
	Dirnanean H23
Dirnanean Y10 P	Drinkstone Panamar P
	Dirnanean N23 P

Calv-Ease		Birth		Index	Growth				Carcase		Index	Maternal				Index	
Dir	Dtrs	GL	Bwt	CV	200	400	Musc	Fat	BV	Milk	Age1st	L/span	Int	MV	MPV		
-0.3	-0.2	0.5	0.0	2	17	29	1.4	0.2	22	2	-0.17	0.2	2.9	16	17		
61%	39%	56%	68%	61%	73%	68%	64%	38%	72%	46%	43%	38%	35%	40%	47%		

Lot 19 Dirnanean Clansman PP

UK 542191 304613
born 06/04/23 Frame Score: 6.2
632 kg 42 cm (10th Aug)

Homozygous polled with a pedigree stacked with our favourite cows—we couldn't resist putting Clansman out with some cows this summer.

Myostatin: No Variants



First Calving	24mth	Feet	10
No Calvings	5	Locomotion	10
Calving Int	370 d	Udder	10
Cow to bull23	708 kg	Teats	10
Wean ratio	47%	FrameScore	6

Dirnanean Zion P	Dirnanean Senator P
	Dirnanean H23
Dirnanean X22 P	Dirnanean Vincent P
	Dirnanean H28x

Calv-Ease		Birth		Index	Growth				Carcase		Index	Maternal			Index	
Dir	Dtrs	GL	Bwt	CV	200	400	Musc	Fat	BV	Milk	Age1st	L/span	Int	MV	MPV	
-0.3	-0.3	0.0	0.2	2	9	20	1.3	0.2	19	6	-0.11	0.3	4.2	15	19	
61%	39%	56%	68%	61%	73%	68%	64%	35%	72%	46%	41%	37%	33%	39%	46%	

Reference Sire Dirnanean Zion P

We have a lot of confidence in Zion, with 14 half sisters in the herd, 9 of them in the stud cows. Between the 2 Coll daughters in his pedigree (H9 and H23), they have calved 27 times.

Easy-fleshing, trouble-free, fertile cows with good temperament and structural soundness for longevity is kinda what this game's about, and Zion nails it.



First Calving	25mth	Feet	10
No Calvings	14	Locomotion	9
Calving Int	365 d	Udder	9
Cow to bull23		Teats	9
Wean ratio		FrameScore	6

Dirnanean Senator P	Berryfell Landmark P
	Dirnanean H9
Dirnanean H23	Luing Coll
	Dirnanean D23

Calv-Ease		Birth		Index	Growth				Carcase		Index	Maternal			Index	
Dir	Dtrs	GL	Bwt	CV	200	400	Musc	Fat	BV	Milk	Age1st	L/span	Int	MV	MPV	
0.4	-0.4	0.2	-0.5	2	5	16	0.1	0.4	18	7	-0.2	0.4	6	23	23	
81%	54%	76%	87%	76%	90%	88%	84%	51%	89%	62%	59%	50%	47%	54%	63%	

Reference Sire

Dirnanean Keystone PP

Top seller Working Genes'20, we were pleased when John Ritchie, Montalt, let us retain a jump of semen.

He is the most powerful Real Deal son we've seen, with stock-bull character from his cocky-lugs right down to his perfectly-placed dark hooves.



Breeding big, sound & fleshy bulls but excellent heifers like P11 (right).



Gibby's Real Deal PP	Gibby's Nicholas 302N
	Gibby's Nabriska 16N
I. Polarine H3 P	Dirnanean Fivestar
	Dirnanean Sioux S10 P

Calv-Ease		Birth		Growth						Carcase			Index	
Dir	Dtrs	GL	Bwt	200	400	600	Mwt	Milk	SS	Cwt	EMA	Fat	TI	SRI
-2.6	-0.1	-0.7	4.0	45	85	85	85	7	1.4	57	5.2	0.5	98	116
70%	55%	77%	85%	81%	78%	74%	61%	48%	72%	64%	50%	61%	(accuracy)	



Pentland Livestock

& Auctions Limited

PROCUREMENT, AUCTION AND VALUATION SERVICES




CONDUCTING REGULAR ONLINE AUCTIONS
OF VEHICLES, MACHINERY, SMALL TOOLS, ANTIQUES & COLLECTABLES
ALSO FARM DISPERSAL & OTHER SALES CONDUCTED LIVE ONSITE

HILLHEAD BUSINESS PARK, CORTACHY ROAD, KIRRIEMUIR, DD8 4PB
FOR A FIRST CLASS SERVICE CONTACT
GRAHAM OR FIONA BURKE

Tel: 07547 369 295 or Email: graham@pentlandlivestock.co.uk
Please visit our up-to-date website at www.pentlandlivestock.co.uk



'Have Gavel Will Travel' 



Lot 15 Jordon Eric at 6mths



Lot 5 Patrick PP at 6mths

2yo Joker daughter with Incheoch Niko calf at foot.



2yo ET sister to Incheoch Nickel (retained stock bull) with Incheoch Niko calf at foot.

Lot 1 Paragon P at 6mths with D18 at 11yrs old



Bull Nutrition

Bull fertility and longevity have always been the key focus for us here at Incheoch and our approach to nutrition is designed to support that.

We've worked with Harbro for a number of years now; they understand what we're trying to achieve and design rations that make the best of what we grow on farm, combined with a few key quality products that fit our system.

Together we have come up with some diet parameters —minimum 50% forage on a DM basis, and maximum 20% Starch for bull rations.

The bulls on offer today have a steady life-time growth pattern of around 1.5 kgs per day.

- There is no creep fed, so that maternal ability can be properly gauged.
- Milk, Grass, Grass-silage and Grass again have been the basis of their diet.
- Supplements in first winter were bruised oats, distiller's grains and 1 kg of Buttercup Calf Rearer nuts.
- Supplement over this summer has been 2 to 3 kg per day of Calf Rearer nuts.

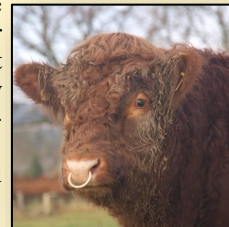


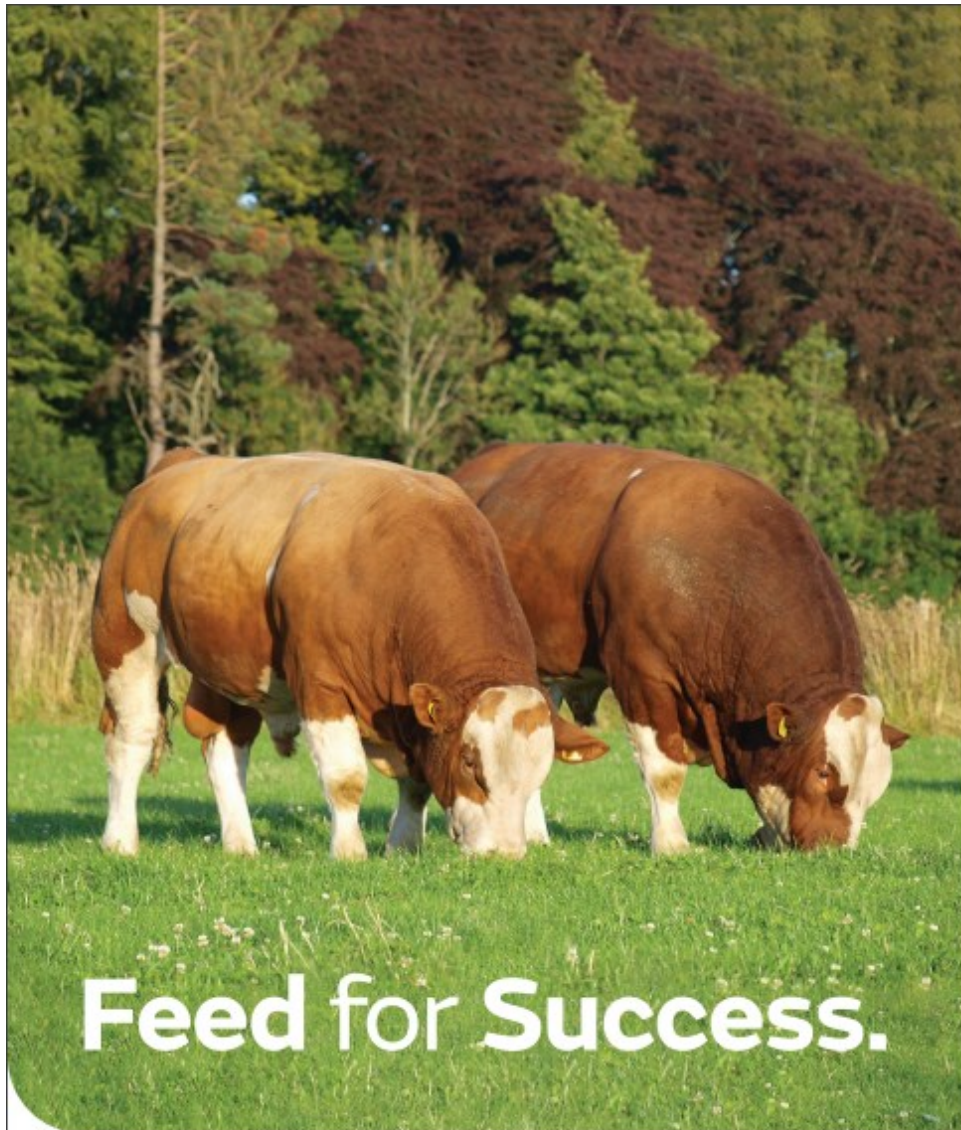
Wintering Option Available

It's fairly easy to winter a young bull to be fit to go to cows as a 2yo — it's another thing having him in sale condition, with a coat of hair and a layer of fat. Help us treat your young herd-sire's rumen and liver with care and buy early.

We can keep your bull at Incheoch until you are ready to take him, free of charge until the end of September, or further through the winter on a feed cost only. Keep payable at uplift at £25/week. Bulls will be looked after to the best of our ability and will remain at our risk when here. All bulls must be collected by end Feb.

Or why not get him home to acclimatise, maybe give him a turn with some cull cows and get him used to the farm?





Feed for Success.

Working in partnership with Incheoch Farm to create a tailored ration that promotes longevity, health and fertility.



www.harbro.co.uk farming@harbro.co.uk

Harbro
SPECIALISING IN FEEDS FOR RUMINANTS

Messrs Finlay McGowan

Incheoch Farms Alyth Blairgowrie Perthshire **PH11 8HS**

Email: neil@incheochfarm.co.uk

Finlay & Clare 01575 560236

Neil & Debbie 01828 633652

N: 07788 100010 D: 07801 783988

Jim Smith 07934 424633

Pentland Auctions 07547 369295

These bulls have been very ably tended to by Jim Smith, please ask him (or Finlay or Neil), for any information or help in selecting a bull, and he would be happy to take you to see bulls' mothers.

Thank you for supporting our 7th bull sale.

We want to make selecting and securing your bull as easy and affordable as possible. We will keep reviewing the sale system—so will welcome your feedback.

Please give us a call or stop by for a chat and look around the farm —help us get our sale and breeding programme in line with your goals.

From all the team at Incheoch.



Lot 2 and Dam